

Standard Server service is a cost effective shared web hosting service to host the customer's web contents.

## Service Outline

### ■ Features

**Reliable Architecture:** The server is housed at IIJA POP connected directly to IIJA's backbone network.

**Cost Effective:** Customer's own domain name, 200MB disk space are provided with \$25 per month

**Outsourced Solution:** No need to maintain the web server at the customer's site.

### ■ Features Summary

Disk Capacity: 200MB

CGI: Counter, Web Form

\* Custom CGI is not allowed

Access Method: SFTP access

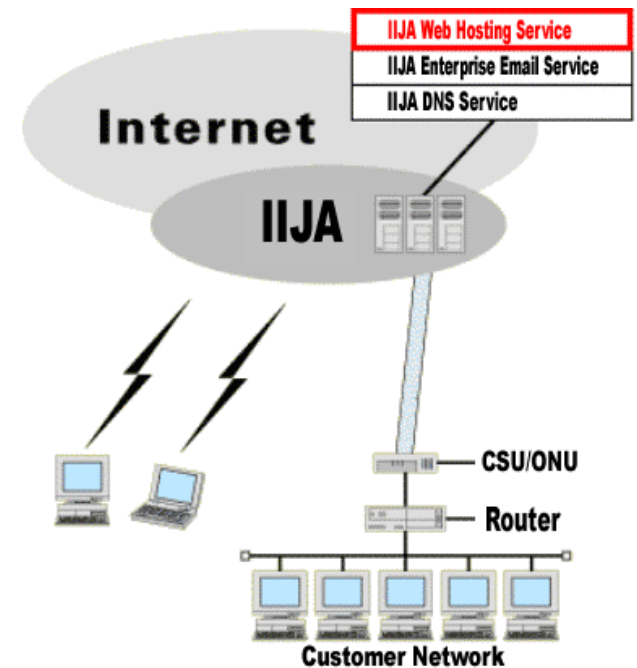
### ■ DNS Settings

Customers not using IIJA DNS Outsource Service

Add a CNAME record of a web server host to the customer's DNS server.

Customers using IIJA DNS Outsource Service

IIJA handles the necessary configuration change.



With the Dedicated Server service, IIJA handles the tasks (network & OS administration, security compliance) on 24/7 basis.

## Service Outline

### ■ Features

Reliable Architecture: The server is housed at IIJA POP connected directly to IIJA's backbone network.

Most of the features needed for the web server are available for use.

### ■ Features Summary

Please refer to the comparison table.

### ■ Requirements

Additional disk space and the Internet bandwidth are available with extra fees.

Please contact IIJA if you need a dedicated server other than the web server.

IIJA will take precautions in halting the service when the customer's contents or the CGI scripts may compromise the server security.

|                       | Standard Server   | Dedicated Server  |
|-----------------------|---|---|
| OS/HTTP Server        | FreeBSD/Apache Virtual Domain   | FreeBSD / Apache  |
| Shell Access          | X   | O   |
| Root Access           | X   | X   |
| Access Control        | O (.htaccess)   | O (.htaccess)   |
| File Upload           | SFTP  | SFTP  |
| Access Log Analysis   | O   | O   |
| Custom CGI            | X   | O   |
| Java Script           | O   | O   |
| Flash Contents        | O   | O   |
| SSL                   | X   | O   |
| PHP                   | X   | O   |
| Database              | X   | O (MySQL/PostgreSQL)  |
| DB Manager WebUI      | X   | O (phpmyadmin/phppgadmin)   |
| ASP                   | X   | O (by customer)   |
| Java SerMet           | X   | O   |
| FrontPage             | X   | O   |
| Site Manager WebUI    | X   | X   |
| Package Configuration | apache13<br>mysql41-server<br>php5<br>perl5.8<br>webalizer2 (or analog)<br>ssh2 (chroot sftp) | apache13<br>mysql41-server<br>php5<br>perl5.8<br>webalizer2 (or analog)<br>ssh2 (chroot sftp) |
| Disk Space            | 200MB   | 10GB  |
| Internet Bandwidth    | 1Mbps   | 1Mbps   |
| Setup Fee             | \$50  | \$500   |
| Monthly Fee           | \$25  | \$250   |